



PRODUCTS 2020

# OFFICE SEATING

PLATNÝ OD / VALID FROM / GÜLTIG AB / VALABLE DU 1. 1. 2020



TEA



ER1 / TE 1301.020



ER1 / TE 1302.010



ER1 / TE 1303.000



SW2 / TE 1322.010



SW2 / TE 1325.010

FLEXi



ST1 / FX 1103A.083A.022



ST1 / FX 1104.083A.022



ST1 / FX 1104.083A



SELF / FX 1106.084



ST1 / FX 1104.084

FLEXi



ST1 / FX 1113A.083A.022



ST1 / FX 1113A.083A



ST1 / FX 1114.083A



SELF / FX 1116.083A



/ FX 1161 



SW2 / FX 1162



SW2 / FX 1163



/ FX 1164



/ FX 1171 



SW2 / FX 1172



SW2 / FX 1173



/ FX 1174



ST1 / VI 1401.083A.022



ST1 / VI 1411.083A



SW+ / VI 1421.083A



/ VI 1431 



/ VI 1434 

FLEXI

FLEXI

VICTORY

EASY PRO



ST1 / EP 1204.083A



SELF / EP 1206.082



/ EP 1222.043 



/ EP 1224.043 

EASY PRO LINE



ST1 / EP 1204L.083A



SELF / EP 1206L.083A



/ EP 1222L.043 



/ EP 1224L 

ZERO G



/ ZG 1352



/ ZG 1352



/ ZG 1351



/ ZG 1351



FL 744 NPR.089 NPR.014



FL 745.089 NPR



FL 750E 



FL 760E 



ST4 / FU 3121.088



ST4 / FU 3121.088



ST4 / FU 3121.088.015

FLASH

FUTURA 150

FOCUS



ST1 / FO 642C.083A.024



/ FO 646A 



/ FO 647E 



/ FO 649E 

ANATOM



ST1 / AT 985A.083A.027



ST1 / AT 985A.083A



ST5 / AT 986B.082



/ AT 983 

NET



/ NT 682A 



/ NT 682A.044 



/ NT 685A.044 



/ NT 685A 



/ WB 950.000 



/ WB 950.001 



/ WB 950.002 



/ WB 950.010 



/ WB 950.011 

WEB



/ WB 950.100 



/ WB 950.101 



/ WB 950.102 



/ WB 950.110 



/ WB 950.111 

WEB



/ WB 950.300 



/ WB 950.301 



/ WB 950.302 

WEB

RONDO



/ RO 942A.044 



/ RO 943A 



/ RO 952A.044 



/ RO 953A 

REWIND



/ RW 2101 



/ RW 2102.043 



/ RW 2103 



/ RW 2106 



/ RW 2108.043 

REWIND



SW+ / RW 2111



SW+ / RW 2112.043



SW+ / RW 2113



/ RW 1230





/ SI 4101.002 



/ SI 4101 



/ SI 4102 



/ SI 4103 



/ SI 4104 

SITTY



/ SI 4111 



/ SI 4112 



/ SI 4113 



/ SI 4114 



/ SI 6520

SITTY



SW+ / SI 4121



SW+ / SI 4122



SW+ / SI 4123



SW+ / SI 4124

SITTY

POPPY



/ PP 247 



/ PP 248 



/ PP 249.01



/ PP 249.02

BELLO



/ BL 7360

AKUSTIK



/ AK 5710.03



/ AK 5710.04



/ AK 5710.05



/ AK 5711.02

TABLES /  
HI TABLES

ADJUST /  
ADJUST 2

UNION



/ TA 856.01



/ TA 861.01



/ TA 856.02



/ TA 861.02



/ TA 863.01



/ TA 863.02



/ AD 5501



/ AD 5471



/ AD 5481



/ UN 8011



/ UN 8021

MULTI



/ MU 420



/ MU 420

CLAP



/ CP 0415



/ CP 0415

TIP-UP



/ TU 890.01



/ TU 890.02



/ TU 890.02

ADAPT 2  
EASY PRO /  
FOCUS  
ZET



ST2 / AD 7401.082



ST2 / AD 7401.083A.023



ST2 / AD 7401.083A.023

FAN



ST5 / EP 1207.082



ST5 / FO 641F.082



ST5 / ZE 919A.083A.027



ST5 / ZE 919A.083A



ST5 / ZE 916B.082

ECONOMY



/ EM 550 



/ EM 560 



/ EM 570.031 



/ EM 554 



/ EM 564.031 

WOODY



/ WO 227 



/ WO 228 



/ WO 229 

MOVE



/ MV 7761



/ MV 7761.01



/ MV 7762



/ MV 7762.01



/ LO 715.09



/ LO 716.09



/ LO 717.09



/ LO 715.07



/ LO 716.07



/ LO 717.07



/ LO 715.06



/ LO 716.06



/ LO 717.06

LOTUS

LOTUS

LOTUS







# MATERIALS

**CZ**

Barevná přesnost může být zaručena pouze dle originálních vzorků látek a dekorů. Barevné vzory látek a dekorů použité v tomto vzorníku jsou tištěné reprodukce, které se mohou lišit od originálních barev a nejsou proto důvodem k reklamaci.

**EN**

Colour accuracy can be guaranteed according to original samples only. Differences in colour compared to the original fabrics are unavoidable in printed catalogues and do not constitute grounds for complaint.

**DE**

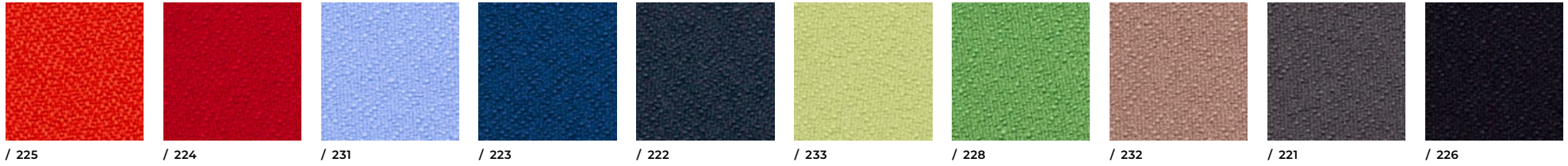
Farbverbindlichkeit kann nur bei Originalmustern gewährleistet werden. Farbabweichungen zum originalen Bezugsstoff sind drucktechnisch bedingt und bieten keinen Anlass zu Reklamationen.

**FR**

La précision des couleurs ne peut être garantie qu'en fonction du motif original des tissus et des décorations. Les motifs de couleur des tissus et des décors utilisés dans ce nuancier sont des reproductions imprimées qui peuvent différer des couleurs d'origine et ne constituent donc pas un motif de réclamation.

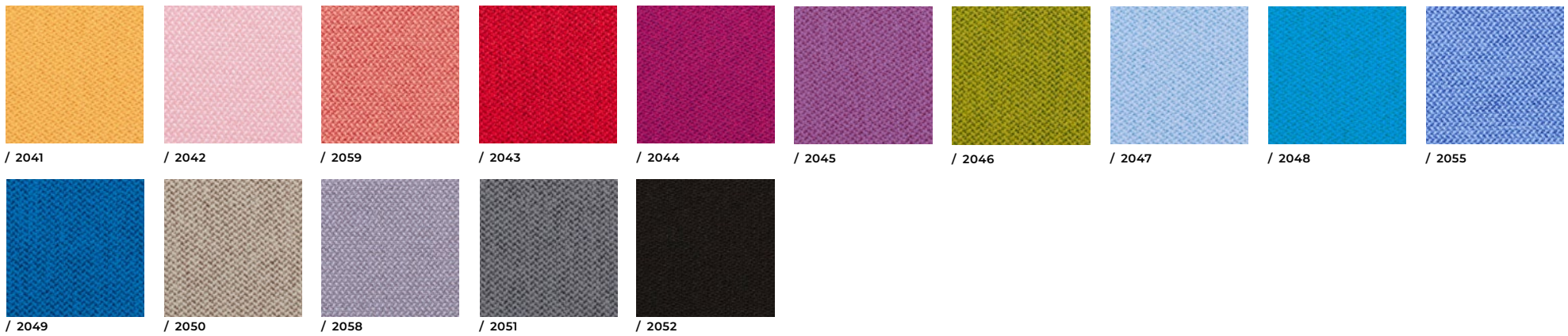
# P / BONDAI

100% Polyester / Abrasion resistance 150.000 Martindale  
/ Flammability EN 1021-1, EN 1021-2, CRIB 5 (BS 5852 PART II),  
BS 7176:1995 Medium Hazard



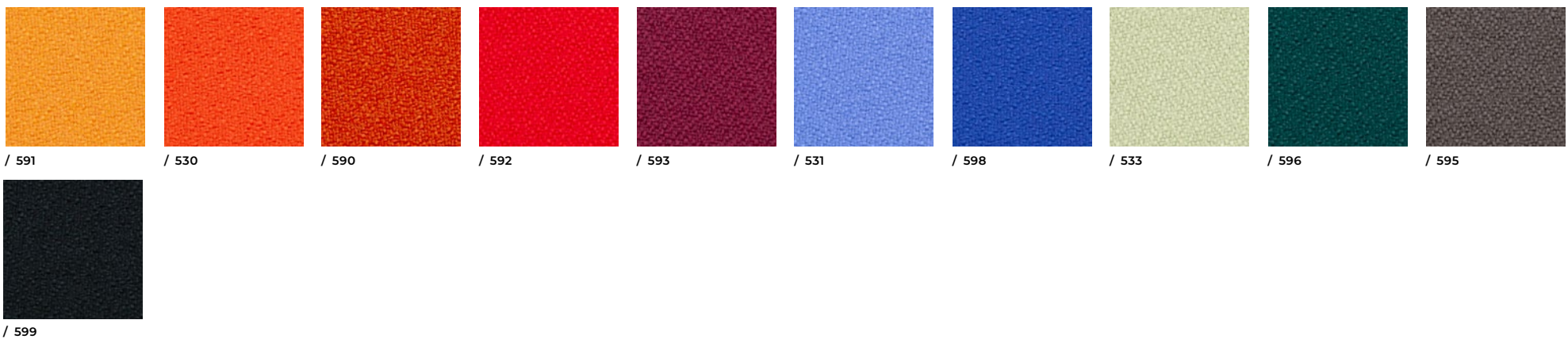
# A / ERA

100% Polyester / Abrasion resistance 100.000 Martindale  
/ Flammability BS EN 1021 - 1:2014, BS EN 1021 - 2:2014,  
BS 7176 : 2007 Low Hazard



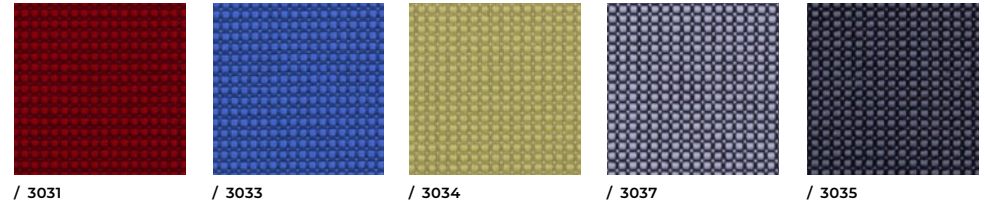
# A / PHOENIX

100% Polyester / Abrasion resistance 100.000 Martindale  
/ Flammability BS EN 1021 - 1:2014, BS EN 1021 - 2:2014, BS 7176 : 2007 Low Hazard



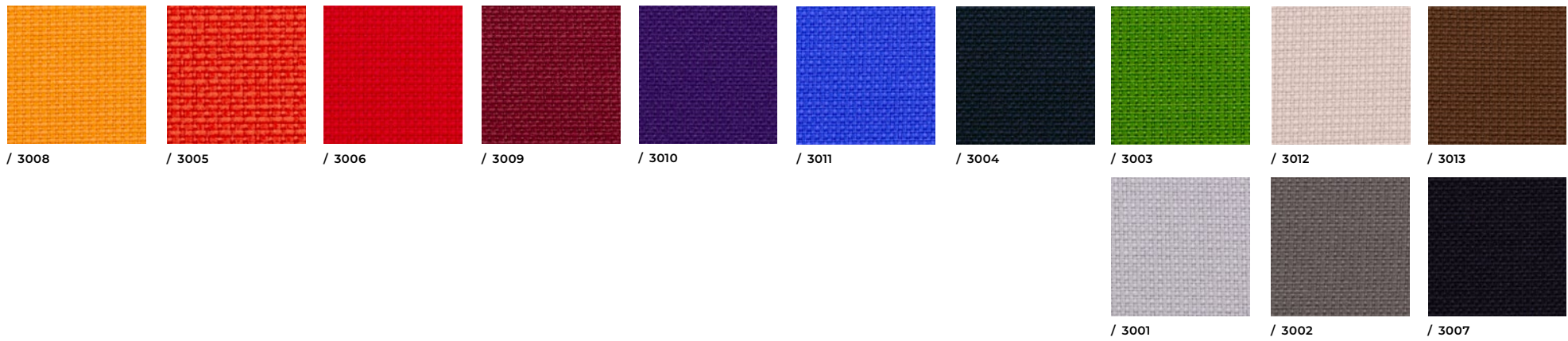
100% Polyester - Trevira CS / Abrasion resistance 100.000 Martindale  
 / Flammability EN 1021-1, EN 1021-2, CRIB 5 (BS 5852 PART II),  
 BS 7176:1995 Medium Hazard

## RELAX BICO / B



100% Recycled Polyester / Abrasion resistance 100.000 Martindale  
 / Flammability BS EN 1021 - 1:2014, BS EN 1021 - 2:2014, BS 7176 : 2007  
 Low Hazard, BS 7176 : 2007 Medium Hazard

## URBAN / B



100% Vinyl, Backing: 100% Polyester Hi-Loft<sup>2</sup>™  
 / Abrasion resistance >300.000 Martindale  
 / Flammability EN 1021 Part 1 & 2, UNE 23.727-90 1R/M.2,  
 NF P 92-503/M2, DIN 4102 B2, UNI 9175 (1987)

## VALENCIA / B



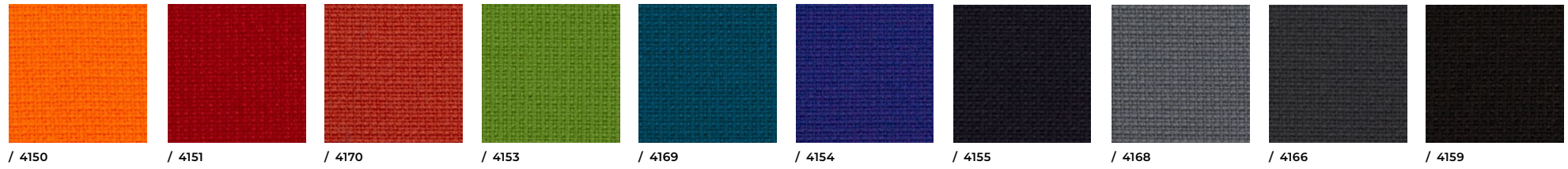
100% Vinyl, Backing: 100% Polyester Hi-Loft<sup>2</sup>™  
 Abrasion resistance >300.000 Martindale  
 / Flammability EN 1021 Part 1 & 2, UNE 23.727-90 1R/M.2,  
 NF P 92-503/M2, DIN 4102 B2, UNI 9175 (1987)

## SILVERTEX / C



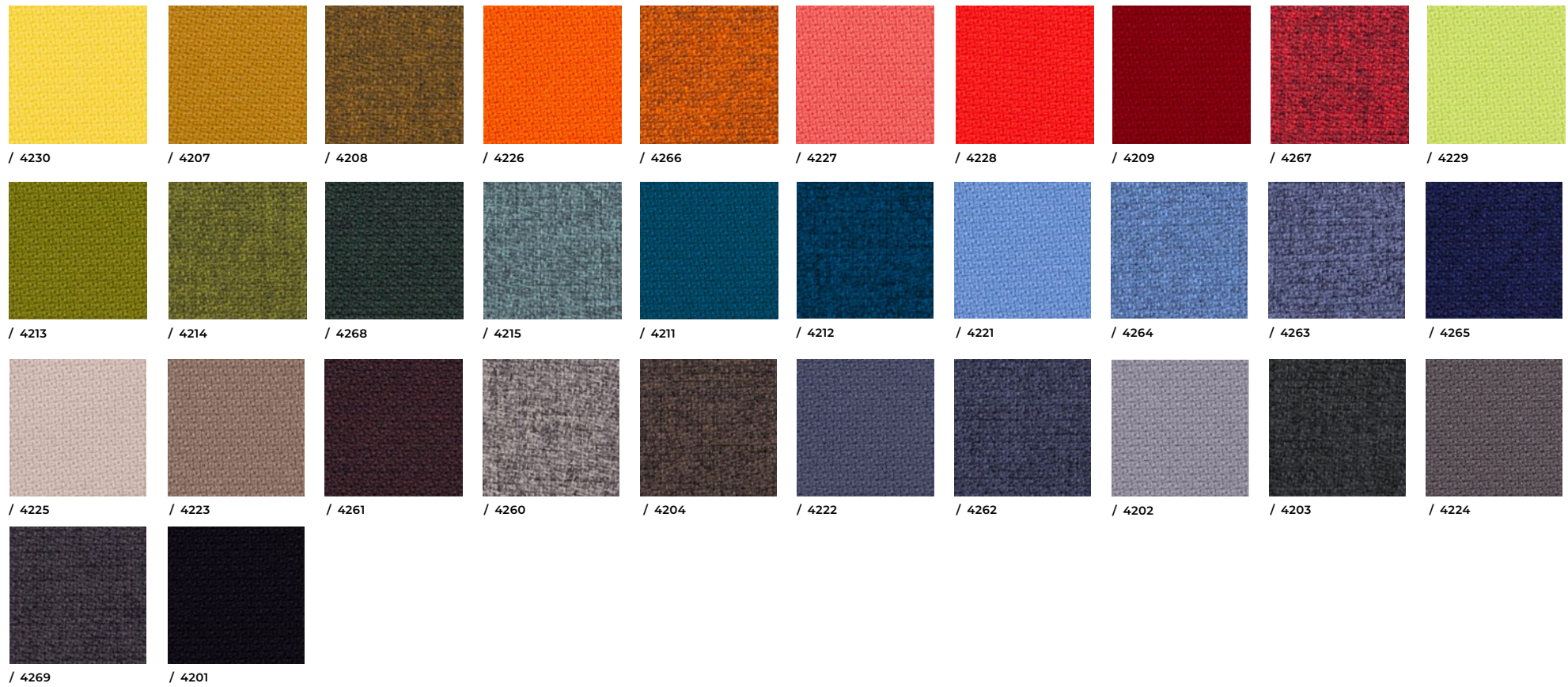
# C / FAME

95% Woll, 5% Polyamide / Abrasion resistance 200.000 Martindale  
/ Flammability BS EN 1021 - 1&2, BS 5852 CRIB 5, BS 7176 Medium Hazard



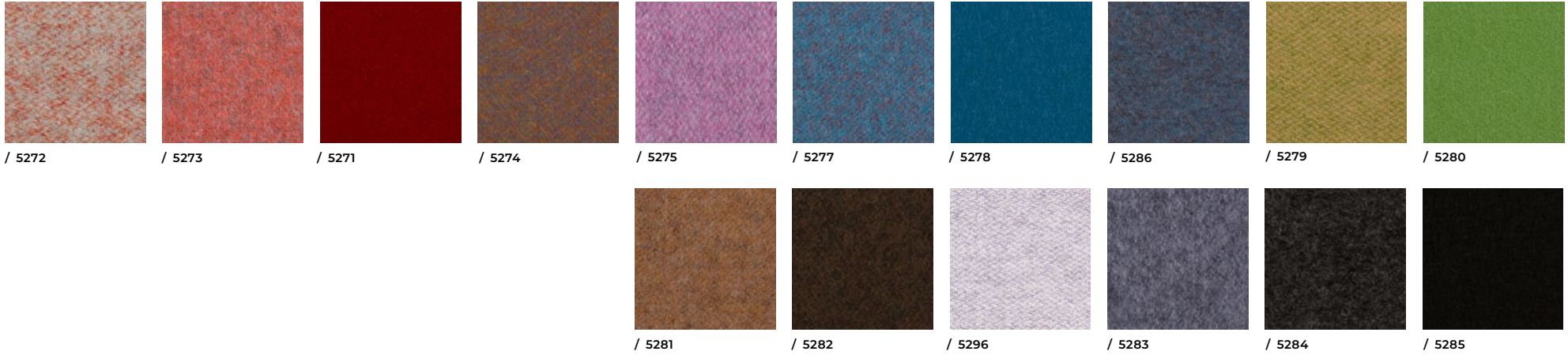
# C / STEP / STEP MELANGE

100% Trevira CS / Abrasion resistance 100.000 Martindale  
/ Flammability EN 1021 - 1&2, BS 5852 CRIB 5,  
BS 5851 PART 1&2, BS 7176 Medium Hazard



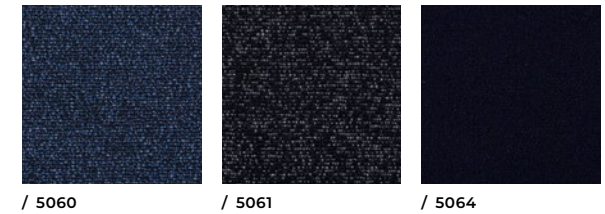
95 % Wool, 5 % Polyamid / Abrasion resistance 100.000 Martindale  
/ Flammability EN 1021 - 1, EN 1021 - 2, BS 7176 Low Hazard

## SYNERGY / D



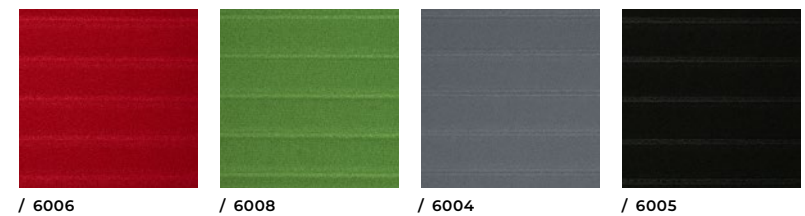
50% Polyamide, 33% Woll, 17% Viscose / Abrasion resistance 400.000 Martindale  
/ Flammability BS EN 1021 - 1:2014, BS EN 1021 - 2:2014, BS 7176 : 2007 Low Hazard,  
BS 7176 : 2007 Medium Hazard, BS 5852:2006, UNI 9175 CLASS 1 IM

## 24/7 FLAX / D



64% Polyester, 36% Polyurethane / Abrasion resistance 150.000 Martindale  
/ Flammability EN 1021 - 1&2

## EASY PRO LINE



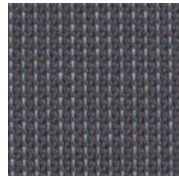
# MESH



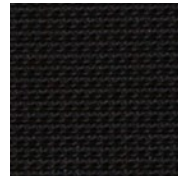
/ K+R 482



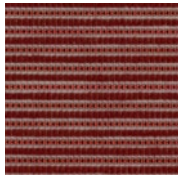
/ K+R 424



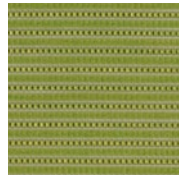
/ K+R 425



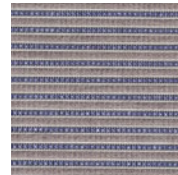
/ K+R 410



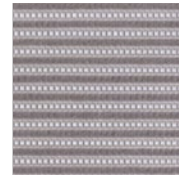
/ RIB 433



/ RIB 434



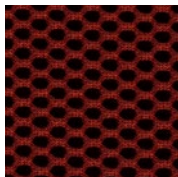
/ RIB 435



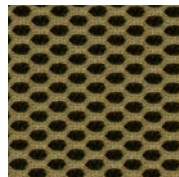
/ RIB 432



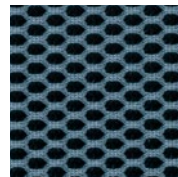
/ RIB 431



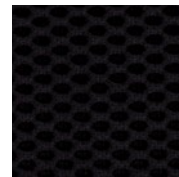
/ OMEGA 471



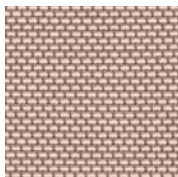
/ OMEGA 472



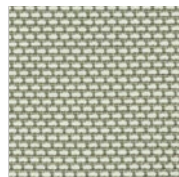
/ OMEGA 473



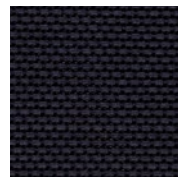
/ OMEGA 474



/ 442



/ 444



/ 441

## **K+R 482**

99 % Polyester, 1 % Elasthan

/ Flammability DIN EN 1021:2006 PART 1

## **K+R**

97% Polyester, 2% Polyamid, 1% Elasthan

/ Abrasion resistance 30.000 Martindale

/ Flammability DIN EN 1021:2014-01 PART 1

## **RIB**

58 % Polyamid, 34 % Polyester, 8 % Polyacryl

/ Abrasion resistance 150.000 Martindale

/ Flammability DIN EN 1021:2014-01 PART 1

## **OMEGA**

100% Polyester / Abrasion resistance 100.000 Martindale

/ Flammability BS EN 1021 1&2, BS 5852 PART 1 0, 1

## **SHRINKX**

70% Polyester, 30% Polyamid

/ Abrasion resistance 170.000 Martindale

/ Flammability D - DIN EN 1021-1

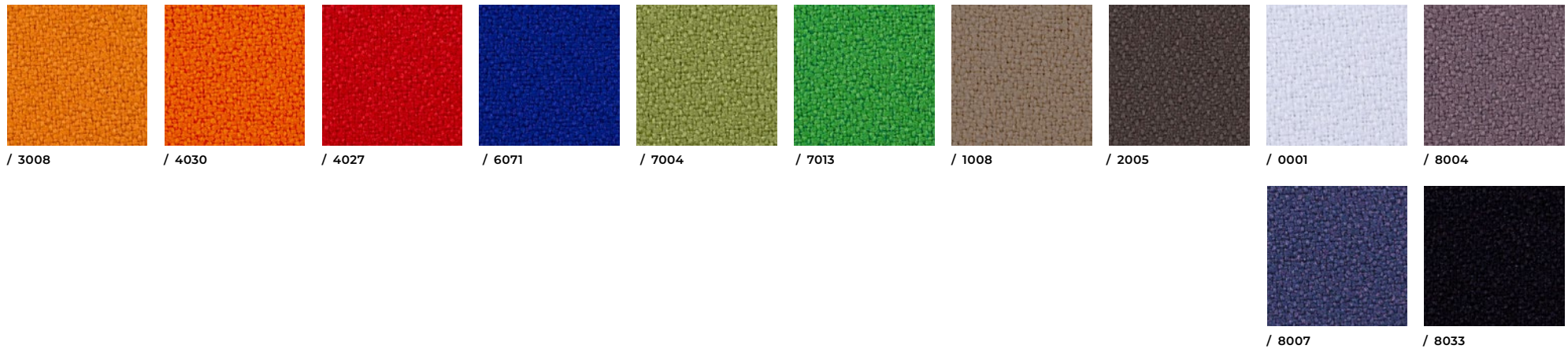
Leather Thickness 0,9 – 1,00 mm  
Leather Suitable for Upholstery

## leather / **PRINCE** / E



100 % Polyester Trevira CS / Flammability EN 1021 - 1, EN 1021 - 2,  
BS 7176 Medium Hazard

## **AKUSTIK**



## **TABLE TOP LAMINATE**





**Rim**<sup>®</sup>

[WWW.RIM.CZ](http://WWW.RIM.CZ)